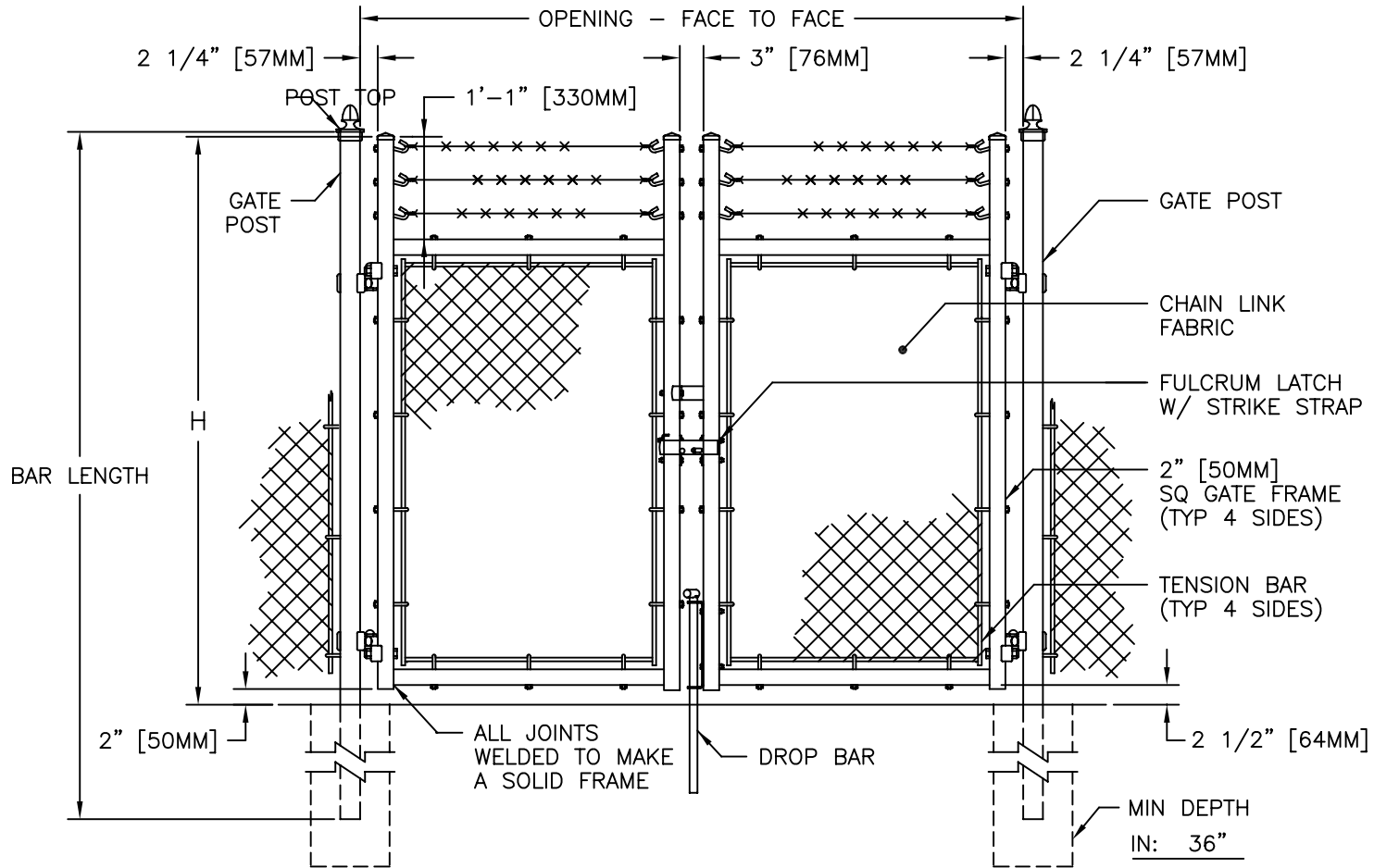




GATE PLAN



GATE ELEVATION

SEE DWGS 3-1001 & 3-1005 FOR DIMS & DETAILS

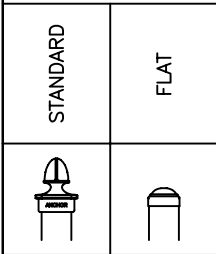
NOTES:

1. METRIC DIMENSIONS ARE NOMINAL EQUIVALENTS TO U.S. DIMENSIONS.
2. SPECIFICATIONS SHOWN CAN BE CHANGED BY MASTER HALCO ONLY.
3. FOOTING WIDTH TO BE (4)X POST WIDTH.
4. GATES MAY BE MANUALLY OR ELECTRICALLY OPERATED. HARDWARE WILL VARY FOR ELECTRICALLY OPERATED GATES.

NOM HEIGHT (H)
7'-0" [2134MM]
8'-0" [2438MM]
9'-0" [2743MM]
10'-0" [3048MM]
11'-0" [3353MM]
12'-0" [3658MM]
13'-0" [3962MM]

OPENING (F/F)
8'-0" [2438MM]
10'-0" [3048MM]
12'-0" [3658MM]
14'-0" [4267MM]
16'-0" [4877MM]

END & CORNER POST TOP OPTIONS



WIDTH
IN: _____
MM: _____



ANCHOR FENCE PRODUCTS
by Master Halco
Orange, CA
Phone No.: 800-229-5615
www.FenceOnline.com

TYPICAL DOUBLE SWING GATE

SQUARE (OR ROUND) END POSTS,
WITH BARBED WIRE

BY:	JRR
DATE:	01-02-96
REV:	C
REV DATE:	08-25-06

DWG:	3-1025R
LAYER:	1
SCALE:	1/2" = 1'-0"