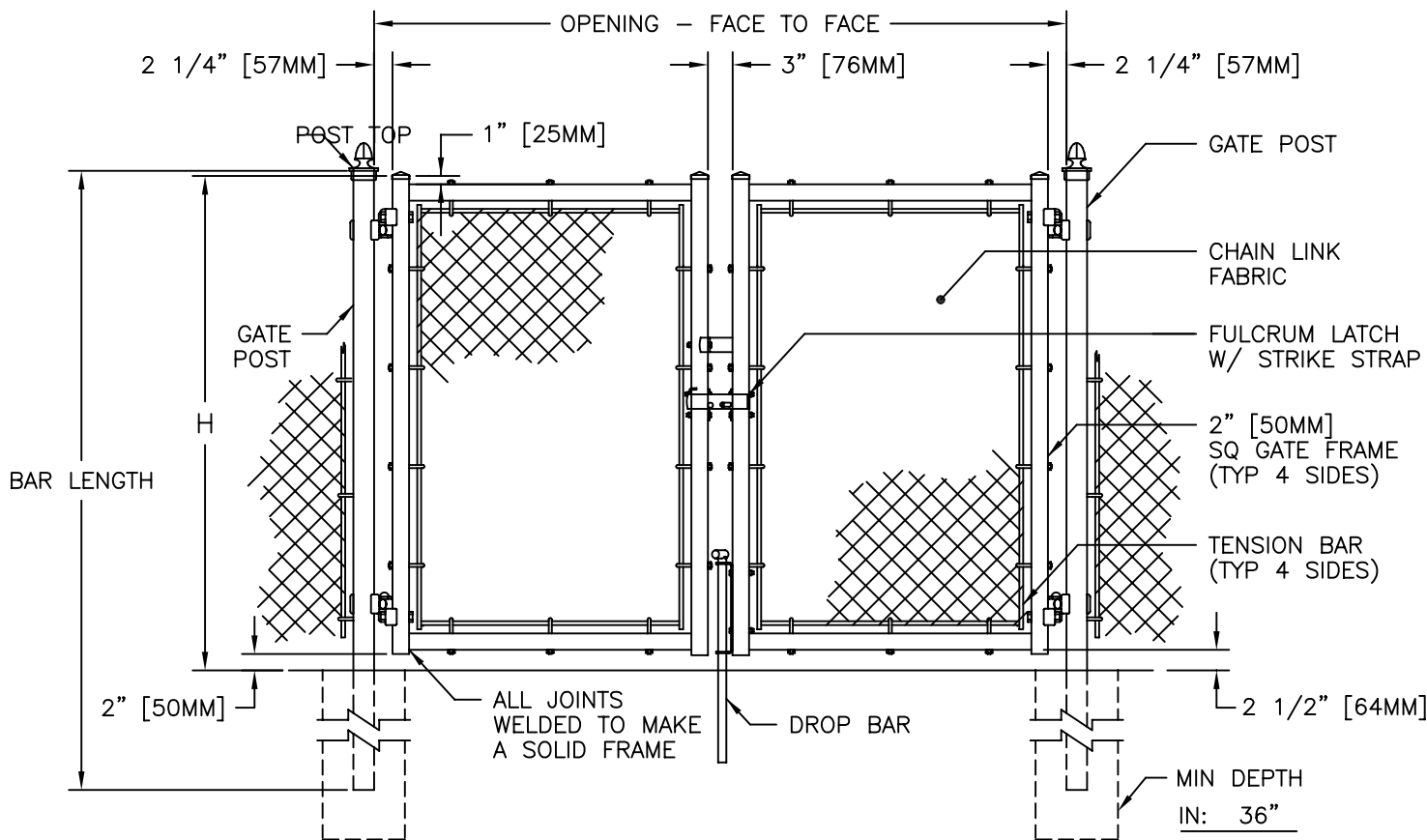




GATE PLAN



GATE ELEVATION

SEE DWGS 3-1000 & 3-1005 FOR DIMS & DETAILS

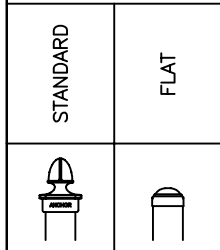
NOTES:

1. METRIC DIMENSIONS ARE NOMINAL EQUIVALENTS TO U.S. DIMENSIONS.
2. SPECIFICATIONS SHOWN CAN BE CHANGED BY MASTER HALCO ONLY.
3. FOOTING WIDTH TO BE (4)X POST WIDTH.
4. GATES MAY BE MANUALLY OR ELECTRICALLY OPERATED. HARDWARE WILL VARY FOR ELECTRICALLY OPERATED GATES.

NOM HEIGHT (H)
6'-0" [1829MM]
7'-0" [2134MM]
8'-0" [2438MM]
9'-0" [2743MM]
10'-0" [3048MM]
11'-0" [3353MM]
12'-0" [3658MM]

OPENING (F/F)
8'-0" [2438MM]
10'-0" [3048MM]
12'-0" [3658MM]
14'-0" [4267MM]
16'-0" [4877MM]

END & CORNER POST TOP OPTIONS



WIDTH  
IN: \_\_\_\_\_  
MM: \_\_\_\_\_

MIN DEPTH  
IN: 36"  
MM: 914



**ANCHOR FENCE PRODUCTS**  
by Master Halco  
Orange, CA  
Phone No.: 800-229-5615  
www.FenceOnline.com

TYPICAL DOUBLE SWING GATE  
SQUARE (OR ROUND) END POSTS,  
WITHOUT BARBED WIRE

BY: JRR  
DATE: 01-02-96  
REV: C  
REV DATE: 08-25-06

DWG: 3-1015R  
LAYER: 1 SHEET: 1  
SCALE: 1/2" = 1'-0"