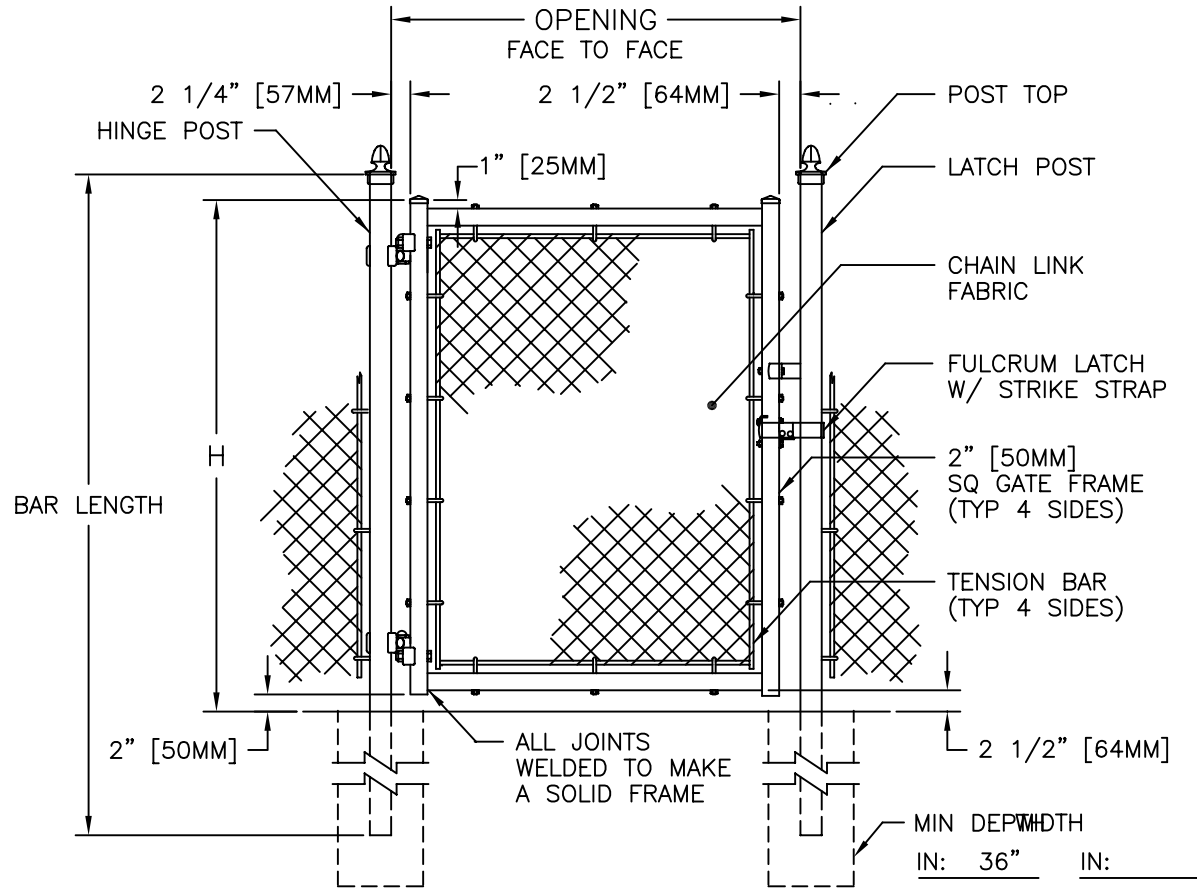


GATE PLAN



GATE ELEVATION

SEE DWGS 3-1000 & 3-1005 FOR DIMS & DETAILS

NOTES:

1. METRIC DIMENSIONS ARE NOMINAL EQUIVALENTS TO U.S. DIMENSIONS.
2. SPECIFICATIONS SHOWN CAN BE CHANGED BY MASTER HALCO ONLY.
3. FOOTING WIDTH TO BE (4)X POST WIDTH.
4. GATES MAY BE MANUALLY OR ELECTRICALLY OPERATED. HARDWARE WILL VARY FOR ELECTRICALLY OPERATED GATES.

| NOM HEIGHT (H) |
|-----------------|
| 3'-0" [914MM] |
| 3'-6" [1067MM] |
| 4'-0" [1219MM] |
| 5'-0" [1524MM] |
| 6'-0" [1829MM] |
| 7'-0" [2134MM] |
| 8'-0" [2438MM] |
| 9'-0" [2743MM] |
| 10'-0" [3048MM] |
| 11'-0" [3353MM] |
| 12'-0" [3658MM] |

| OPENING (F/F) |
|----------------|
| 3'-0" [914MM] |
| 3'-6" [1067MM] |
| 4'-0" [1219MM] |
| 5'-0" [1524MM] |
| 6'-0" [1829MM] |

| END & CORNER POST TOP OPTIONS | |
|-------------------------------|------|
| STANDARD | FLAT |
| | |



ANCHOR FENCE PRODUCTS
 by Master Halco
 Orange, CA
 Phone No.: 800-229-5615
 www.FenceOnline.com

TYPICAL SINGLE SWING GATE
 SQUARE (OR ROUND) END POSTS,
 WITHOUT BARBED WIRE

| | |
|-----------|----------|
| BY: | JRR |
| DATE: | 12-20-95 |
| REV: | C |
| REV DATE: | 08-25-06 |

| | |
|--------|--------------|
| DWG: | 3-1010R |
| LAYER: | 1 |
| SCALE: | 1/2" = 1'-0" |